

Lake Eau Claire Association  
PO Box 229  
Augusta, WI 54722-0229

*Address Service Requested*

PRSRT STD  
U.S. Postage Paid  
Augusta, WI  
54722  
Permit No. 14

## Lake Eau Claire Christmas Party Black Bear Supper Club January 7, 2012

**It's party time again!** Here are the details for our annual lake association Christmas party. This is a great time to hook up with old friends as well as make some new ones here around our lovely Lake Eau Claire.

As your new association president, I am really looking forward to the opportunity to introduce myself and listen to your concerns. Our association board has endorsed the new 2012 Lake Eau Claire Plan.

Here is an excellent chance to visit with our board members and me to learn more about it.

### **Banquet Menu Choices:**

Broasted Chicken or BBQ Ribs or  
Tenderloin Tips or Cod (Fried or Broiled)  
A Salad Buffet  
Veggies, Potatoes, Gravy  
Dressing  
Rolls and Coffee

Time: Social hour at 5:00 p.m., serving at  
6:15 p.m.

Cost: \$17.50 per person

Reservations: Please contact Ron  
Wilkinson at 715.286.2495

President Fred Poss



Merry  
Christmas

## FISHIES IN THE BUSHES

Lake Eau Claire literally took a real plunge on Saturday, October 29. In fact, the lake took twenty plunges. That is because about two dozen volunteers turned out at the north side boat landing bright and early to help construct, load onto a pontoon, and sink twenty new fish spawning shelters in our fine lake. The shelters can be generally thought of as a type of fish crib. However, that is far from what they actually look like and how they perform. The typical fish crib is a tall rectangle made out of wooden logs with brush stuffed into the middle. These tall structures are weighted on four ends and dumped into deep parts of a lake. Our fish "spawning shelters" look more like the letter I with a log across the top and bottom running horizontally to the I. How they are made begins with two heavy blocks of concrete which have a eight to ten foot half-log connected to them with heavy-duty plastic connectors. That makes the I. Then on the top and bottom ends long tree boughs are stuffed into the holes in the concrete blocks running left and right away from the I. The same is done for the bottom of the shelter. Various woods have been used to see which works best. The shelters are then lifted onto a pontoon, carried to a site, and slid down into place. The property owner has to give us written consent (so contact me if next spring you would like to add your name to the list). Dr. Rod Zika then takes a GPS reading on precisely where the spawning shelter is so we can check it each year to see if it still in one piece. Fish, especially bass, love to get under wood to spawn. There is about a foot or more of space between the half log and the lake bottom to provide for this, and the tree boughs attract phytoplankton and minnows. We hope to do another twenty or more shelters this spring and possibly next fall if we have enough volunteers and a few donations. Your Lake Association at work for you!

## Thoughts from the President

**In the last newsletter**, an article publicized an important meeting. That meeting was the Lake District Management Plan meeting. Its agenda included a presentation of scientific data on the sand and algae problems in Lake Eau Claire, what needs to be done about them, and how much time we have to get the problems under control. My purpose here is to share with you my own personal take on that meeting.

First, the meeting was very well attended. As chairperson, I introduced Buzz Sorgi from the DNR, Kelly Jacobs who works with lakes for Eau Claire County, and Dr. Rod Zika, our resident scientist. Each presented their data, studies by the Army Corps of Engineers, and recommendations based on scientific fact. In summary, the 2012 Lake Management Plan for our lake has the following objectives: (1) setting up two new sand traps upriver and east of our lake to prevent sand from filling up anymore of Skid Row and the river channel; (2) building a temporary restraining dam around the sandbar at Skid Row so we can divert the river to the north as we shovel sand and truck it away; (3) creating a little pump house on the west end of the lake to flush oxygen into the deep water to prevent formation of the deadly blue-green algae blooms the lake has endured; and (4) when that is done, to go back upriver and open up the back channels and logjams which in the past provided outstanding spawning areas for fish. The best estimate science can give us about Lake Eau Claire is since the upriver areas and Skid Row are now clogged with sand, we have only about three to five years to use cheap, mechanical dig-and-truck away methods. Mechanical digging and hauling based on contractor estimates place the annual cost of maintaining the Management Plan at about \$45,000 to \$50,000 a year. If lake residents do not act within five years, the sand will have gone so far past Skid Row the only means to get at it is with hydraulic pumping—and that method is incredibly expensive—as Lake Altoona residents have learned.

But the good news is that Lake Eau Claire is not Lake Altoona. We do not have to spend \$1.6 million dollars to save our lake. And at the end of the meeting, no one in attendance disagreed with what the scientific studies showed. To me, that was the first time I saw real agreement among lake residents that we do have an urgent problem. I call that progress! And now you know, too.

So what is next? Again, at the end of the meeting I asked what people wanted done. There was agreement we all need to start working together, not fighting. People said they wanted more information distributed (like this article), a group of opponents to join together, and a public meeting when solutions are reached. To that end, Marlo Orth who supports the Lake District petition and Brian Kellett who supports using a referendum or voluntary annual contracts with the Lake Association have brought key members together to discuss differences and investigate possibilities. That is real progress, too. I told that group I want to investigate alternative funding means which could support the funding method which works best. These alternatives could include selling the sand we dig, putting an electrical generator on the spillway of the dam and selling the electricity, pursuing government grants, and creating a fund to help financially-stressed property owners. This cooperation can only mean good things for Lake Eau Claire—if we can work together in time to use simple, cheap methods to fix the lake. For more information, please contact me Fred Poss, at [fredposs@gmail.com](mailto:fredposs@gmail.com).

Together we can do great things!




**C&G's**  
**Hide Away Bar**  
 County Road ND  
 Lake Eau Claire  
**Food - Spirits - Beer**

Open 365 days a year!  
 Saturday - Sunday - open 8 A.M.  
 Monday - Friday open 10 A.M.  
 (715) 286-5290

Serving Breakfast on  
 weekends from 8 A.M. - Noon.  
 Spaghetti Mondays, Taco Tuesdays, Friday  
 Fish and Ribs.

# Riverside Junction

TP 715-456-2434  
 Highway 27 at the Eau Claire River Bridge North of Augusta, WI



RiversideJunction.com  
 Riverside@Bluebuzz.net  
 Open - 9 AM-5 PM, evenings by arrangement

Renting: Canoes—Kayaks  
 Wine and Cheese Shop

**A BEAUTIFUL DAY, NOTHING TO DO? CANOE-CANOE -CANOE!**

## THE BADGER CRAFTSMAN

HOME REMODELING  
 ADDITIONS & REPAIRS  
 DECKS AND PROJECTS




**DOUG JACOBS**  
 (715) 286-2156



## VALUATION SPECIALISTS

FULL SERVICE APPRAISAL FIRM  
**Jeffrey D. White, ASA**  
 Certified General Appraiser  
 3940 Oakwood Hills Parkway, Ste. 2, Eau Claire, WI 54701

Office: 715-834-8210/800-449-6700  
 Fax: 715-838-8464  
 Email: jeff@valuationspecialists.com  
 Web Site: www.valuationspecialists.com



## Walters Buildings

Commercial, Suburban, Agricultural

**Robin Walsh**  
 VP Operations - West  
 E18745 County Road R • Augusta, WI 54722  
 800-225-2591 • Fax: 715-286-5096  
 Cell: 715-797-0947 • Email: rwalsh@waltersbuildings.com  
 www.waltersbuildings.com



## Alternative Resource Management, LLC

Energy Conservation Services  
**Michael D. Lea**

E21680 Hwy. SD  
 Augusta, WI 54722  
 armlea@centurytel.net

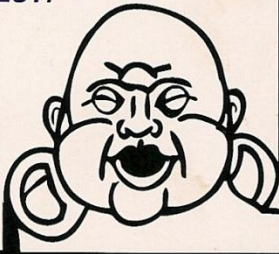
(715) 286-5423  
 Cell (715) 225-8768  
 Fax (715) 286-2531

Home Performance Testing



*The Beavers are the BEST!*


Belly up to  
**Buddha's!**  
 Leann & Mitch Balliett, owners  
 (715) 286-2654 • Augusta



## SANDY HILL CAMPGROUND

Ron & Ginger Wilkinson

715-286-2495  
 SHillCamp@aol.com



E21100 ND Road  
 Augusta, WI 54722

Across the road from Lake Eau Claire

# Sanctuary Massage

Certified Massage Therapist

E18160 County Road N  
( 2 miles west of Lake Eau Claire)

Therapeutic and relaxation massage

Get a 1 hour introductory massage for \$25  
call 286 • 4041



The First in Synthetics®

SINCE 1972

**BILL LEBARRON**  
AMSOIL DEALER

**Bill's Welding & Repair**  
S6570 Hwy 27  
Augusta, WI 54722  
(715) 286-5529

## Midwest Marine and Off-Road, LLC

- \* Marine Repair and Parts
- \* Marine Accessories and Equipment
- \* ATV/Off-Road Motorcycle Repair
- \* Off-Road Parts and Accessories

Tom Johnson  
715-597-5577

12643 Norway Road, Osseo, WI 54758

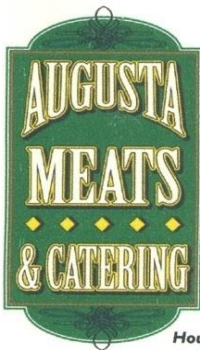


Lawn Care • Landscaping • Snow Removal  
Parking Lot & Street Sweeping

**David Welke,**  
President

715-878-4643  
715-559-9156 (cell)  
[www.premiumlawnservice.com](http://www.premiumlawnservice.com)

Free Estimates  
Contracting Available  
Commercial/Residential



### Augusta Meats & Catering, LLC

825 Industrial Dr. Augusta, WI 54722  
Phone: 715-286-2920 Fax: 715-286-2925

#### Services:

- Catering
- Fresh meat/cheese counter
- Daily lunch specials
- Slaughtering
- Butchering
- Processing

"We strive to provide quality services at a reasonable price."

Hours: Monday - Friday 8 am - 6 pm, Saturday 9 am - 2 pm

### Beaver Bowl & Pizzaria

Adam & Rebecca Bisson  
Managers

E21930 US HWY 12  
Augusta, Wisconsin  
54722

1-715-286-2746

Business Hours

Mon.- Fri. 11am to 2pm, 4pm to close  
Sat. & Sun. 1pm to close



Jon Yule, Owner  
3610 Mall Drive, Eau Claire, WI 54701  
715.833.2096, ext 401  
FAX: 715.833.1939  
E-MAIL: [JYule@InvisibleInc.com](mailto:JYule@InvisibleInc.com)

- SURVEILLANCE CAMERAS
- BURGLARY INTRUSION ALARMS
- FIRE/LIFE SAFETY ALARMS
- ACCESS CONTROL
- INTEGRATED SECURITY MANAGEMENT SYSTEMS
- UL LISTED CENTRAL STATION SERVICE

[www.NetGuard-Security.com](http://www.NetGuard-Security.com)

### Teri Ries Mortgage Loan Consultant Specializing in 100% Financing

Office: 715-286-4250

Cell: 920-202-1533

Fax: 715-286-4260

Email: [TeriRies@gsf-mortgage.com](mailto:TeriRies@gsf-mortgage.com)

[www.gsf-mortgage.com](http://www.gsf-mortgage.com)

"I value your business and  
will earn your referrals."



E20655 County Road ND  
Augusta, WI 54722



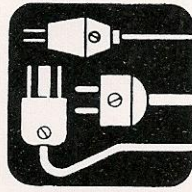
# TRAVIS ELECTRIC

RESIDENTIAL • COMMERCIAL • FARM

DAYLE TRAVIS, OWNER  
WI CERTIFIED

PHONE (715) 286-2007  
CELL (715) 797-2135  
FAX (715) 286-4505

E19413 LIVERMORE RD.  
AUGUSTA, WI 54722



# TUGGER'S CAFE & CATERING

Catering For All Occasions  
123A Lincoln St.  
Augusta, WI 54722

Contact: Tugger Francel  
Owner  
Bus: 715-286-5168  
Cell: 715-533-0201



## BLACK BEAR SUPPER CLUB

*"Where friends meet for  
great food and drinks"*

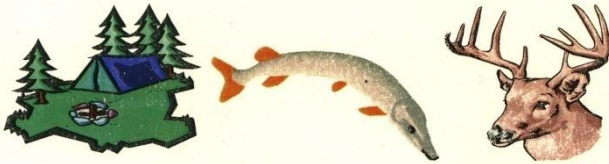
Open at 4 p.m.

S5450 Hwy 27  
Located 5 miles North  
of Augusta  
(715)-286-2687



*The Strength of Community*  
**UNITY  
BANK**

Augusta 715-286-2223 | Fall Creek 715-877-2311  
[www.unitybanking.com](http://www.unitybanking.com) | Member FDIC



## Woodland Country Store

S5340 State Road 27 (715) 286-2112  
Augusta, WI 54722 (715) 286-5183 Fax  
Liza & John Lone – Owner  
[www.woodlandcountrystore.com](http://www.woodlandcountrystore.com)

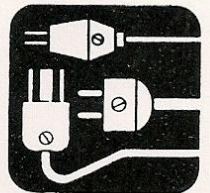
# TRAVIS ELECTRIC

RESIDENTIAL • COMMERCIAL • FARM

DAYLE TRAVIS, OWNER  
WI CERTIFIED

PHONE (715) 286-2007  
CELL (715) 797-2135  
FAX (715) 286-4505

E19413 LIVERMORE RD.  
AUGUSTA, WI 54722



## Bridge Creek Black Angus

Hormone free, corn fed Black Angus Beef.  
Sold by quarter, half, or full beef.

Contact Kory Berlin County Road V, Augusta, WI call  
715-579-6707 to place your order.



# K & M LANDSCAPING

of Eau Claire LLC

- PONDS / PONDLESS WATERFALLS
- RETAINING WALLS
- PAVER PATIOS & SIDEWALKS
- DECORATIVE ROCK & MULCH
- TREES & SHRUBS
- SPRINKLER SYSTEMS
- BLACK DIRT
- PROFESSIONAL LANDSCAPE DESIGN

Located at:  
631 EAST MADISON STREET  
EAU CLAIRE, WI 54703

715-829-1799 Ken • 715-839-8499 Office

715-829-1699 Matt • 715-839-0383 Fax

[kmlandscaping@sbcglobal.net](http://kmlandscaping@sbcglobal.net)



# PIT STOP PUB

Hwy. 27 North, Augusta, WI (715)286-2666

Tim & Peggy Van Gorder

\*Friday Night Fish Fry\*Broasted Chicken\*Sandwiches\*Friday & Saturday  
Night Salad Bar\*Carry-outs or Dine-in

## Augusta True Value Hardware

Locally Owned and Operated for 25 Years

Tools, Construction Equipment, Trucks, Trailers  
Party Rentals – Tents, Tables, Wedding  
& family gathering needs.  
128 W. Lincoln St. Augusta, WI 715-286-2217



## Augusta Bakery

Specializing in Scratch Baking  
Retail and Wholesale

Buns  
Breads  
Cakes & Wedding Cakes  
Doughnuts  
Muffins  
Pastries  
Pies  
Coffee Cakes  
Fresh Take & Bake Pizza



144 W Lincoln St.  
P.O. Box 193  
Augusta, WI 54722  
Phone: 715-286-4700

Email: [augustabakery@yahoo.com](mailto:augustabakery@yahoo.com)  
John and Wendy Deering Proprietors

## THE WOOD SHED

~Home of the Amish~



10,000 Sq. Ft. of Beautiful  
Amish Woodwork & Folk Art  
105 West Lincoln Street

-Highway 12 East  
Augusta, WI 54722  
(715)-286-5404



**Boondocks**  
Bar & Grill

Near the Beautiful Hamilton Falls on the  
Eau Claire River ATV Trail  
9 miles South of Boyd WI on Cty Rd G  
OPEN Mon-Fri 11—close  
Sat & Sun 9—close  
Burgers, Homemade Pizza, Friday Fish Fry

## MAUG CLEANING SERVICE

Specializing in New Construction  
Commercial and Residential Cleaning

Travis Maug  
Osseo, Wisconsin 54758  
(715) 533-1957

Two Decades of  
Experience



Home Remodeling, Repair and Skid Steer Services

Kevin Meyers  
E17485 Hwy D  
Fall Creek, WI 54742

(715) 497-6902  
Licensed and Insured  
References Available

## Note From the Board of Directors Regarding the Lake District

*The people working on forming a lake  
district are independent of the lake  
association; however, the lake association  
does endorse their efforts.*